



BOUTIQUE. CO

CARTER  
LANE


---

## THE BOUTIQUE COLLECTION

---

71-73 Carter Lane, London, EC4V 5EQ

---



## WELCOME TO CARTER LANE

**A hidden gem of a workplace, bringing stunning 21st century design to a truly historic lane just a stone's throw from St Paul's Cathedral.**

Carter Lane has seen centuries of London's history unfold before it, and we're proud to have brought a touch of the modern age to this storied street. Sitting at number 71-73, we've created a workplace that's designed to inspire and engage across all five of its floors, with a stylish entrance, vibrant business lounge, unbranded serviced office space, and rooftop terrace with views of St Pauls all contributing to its majesty.

Known as Shoemakers Row when it was first laid in the 12th century, Carter Lane is part of an area that's steeped in history. It was home to the King's Wardrobe from 1359 to 1666, before suffering catastrophic damage from The Great Fire Of London. But, like a phoenix, the area was resurrected, with much of the rebuilt architecture contributed by the famous Sir Christopher Wren. Catastrophe struck Carter Lane again on 29th December 1940, a night now known as the Second Great Fire of London, when a significant amount of damage was inflicted by bombing during the Blitz.

But Carter Lane recovered once more, cementing its place in London's story. In its current form, Carter Lane is a curiosity-piquing road in an illustrious area, with countless off-shoots down which glimpses of Georgian London can be spied.

Inside 71-73 Carter Lane, you'll see less Georgian influence and more sophisticated and modern design. The 14,000sqft of flexible and fully-furnished private office space within, is available in units spanning a range of sizes suitable for everyone from start-ups to corporates, and is spread across five floors.

The workplace also features well-equipped meeting rooms, a sleek business lounge, and two distinct outdoor spaces in the form of a courtyard and rooftop terrace that offer a place to get away from your desk. Where else could you be more connected to the rest of London, with nearby tube stations including St Paul's Cathedral and Blackfriars giving you a route to wherever you need to be.



# THE BOUTIQUE COLLECTION

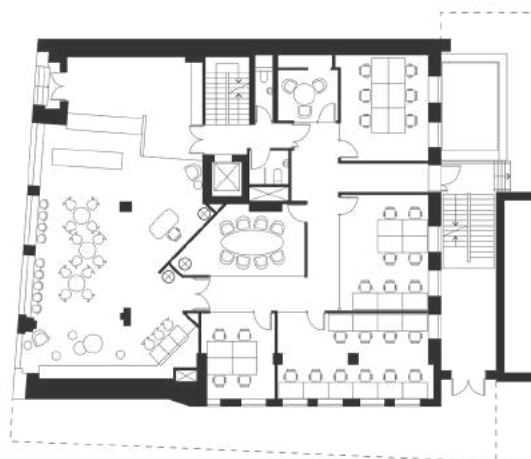
Floor plans



LG



G



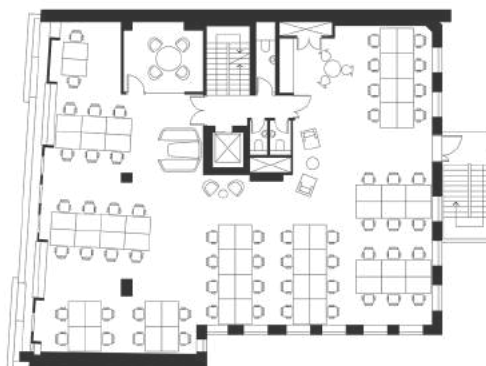
I



2



3





## THE BOUTIQUE COLLECTION

Choose your workspace



## FEATURES AND FACILITIES

- Dog-friendly
- Reception
- Barista-style coffee
- WiFi
- Business-grade fibre-optic broadband
- Rent, business rates, utilities, service charge, and building insurance inclusive
- Daily cleaning and general building maintenance
- Air filtration and fresh airflow
- VoIP telephony
- Break-out areas
- Part of The Boutique Members Club
- 24-hour access
- Cyclist-friendly
- Passenger lift
- Mailing and trading address

## CHOOSE YOUR WORKSPACE



### Private Offices

A collection of high-quality private flexible serviced offices.



### Meeting Rooms

Thoughtfully-designed meeting rooms available on-demand.



### Event Space

Host your next event in our unique event spaces.



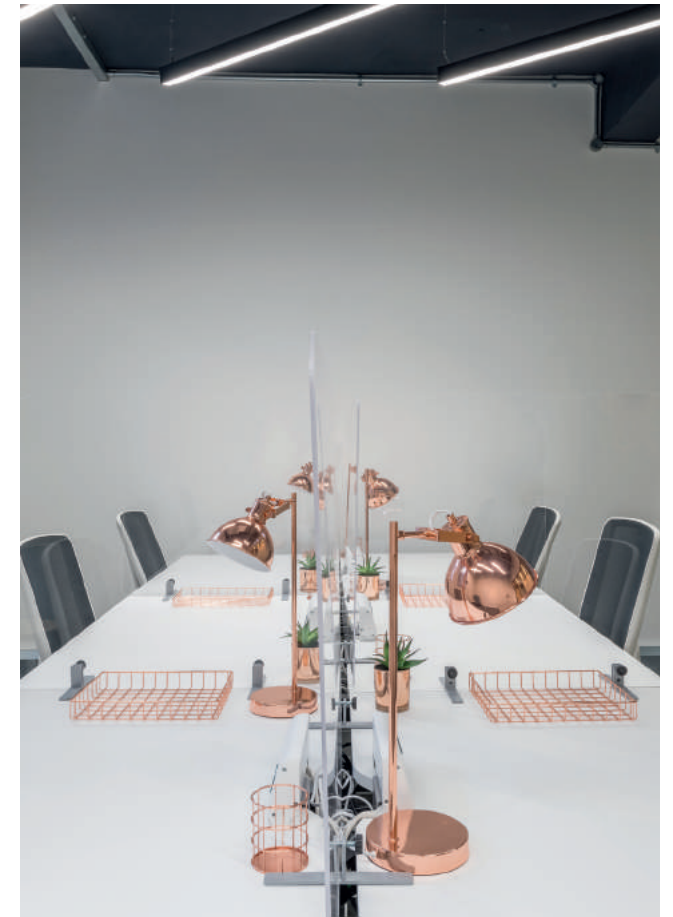
### Membership

This workplace is part of the Boutique Members Club, work remotely from the lounges from just £70 per month.



### Membership + Virtual Office

Enjoy a professional trading address with the flexibility to work in any of our Boutique Members Club lounges.



## THE BOUTIQUE COLLECTION

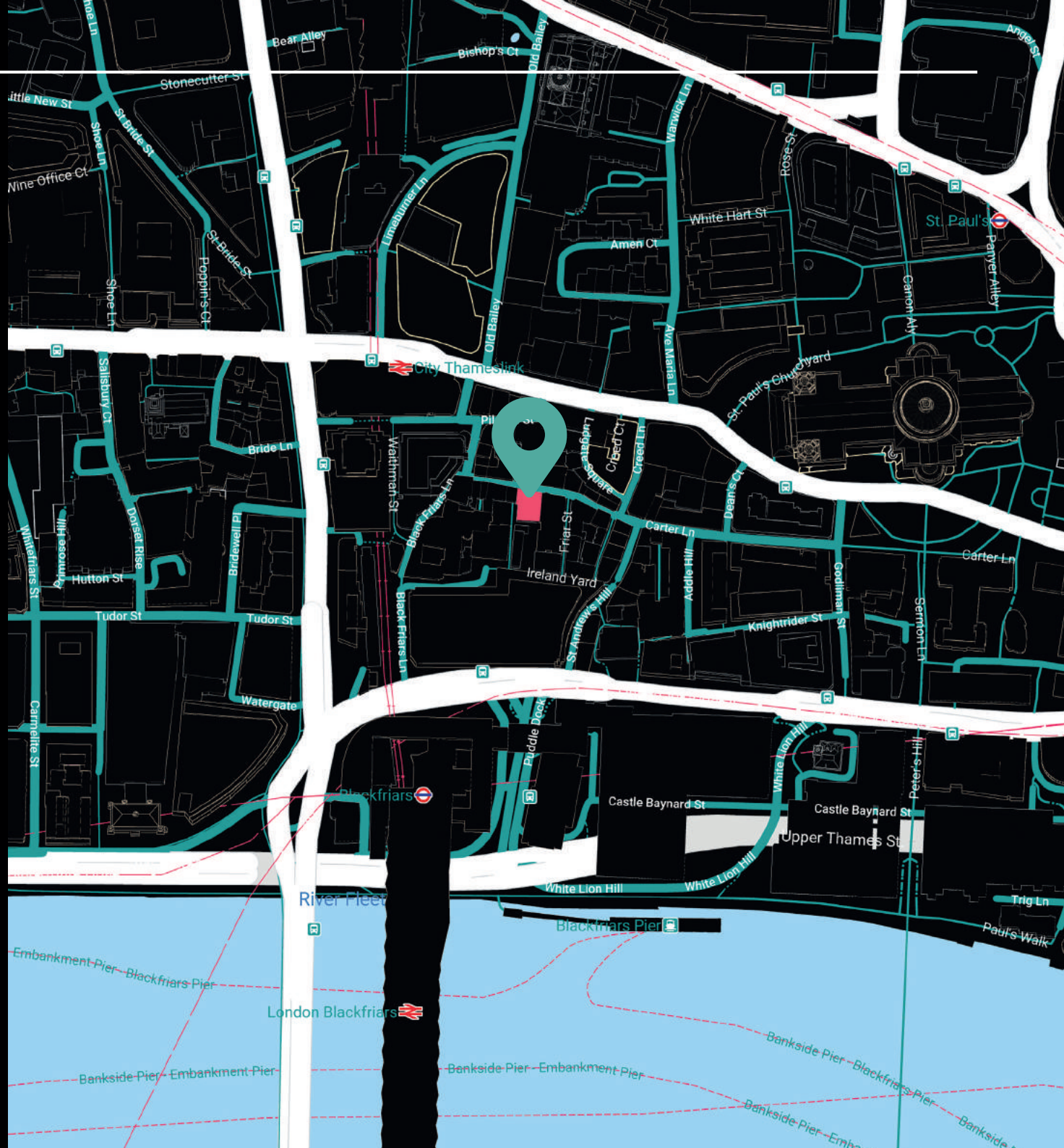
Map location

## LOCATION

**71-73 Carter Lane**  
London  
EC4V 5EQ

71-73 Carter Lane is in a bustling area of the City of London, just over five minutes on foot from St Paul's Cathedral and Blackfriars Station.

There's a huge range of cafes, restaurants, bars, shops and more in the immediate vicinity for you to make use of. Some of London's most important cultural institutions are just a short tube ride away.



---

## THE BOUTIQUE COLLECTION

---

Things to do nearby

---



## THINGS TO DO NEARBY

### WALK THE SOUTHBANK

Crossing at Blackfriars Bridge, you can reach the Southbank in just 10 minutes on foot, where you can enjoy the walk along the Thames towards the London Eye.

### EXPLORE THE CITY

In the other direction, you can head deeper into the City to explore St Paul's Cathedral, enjoy innumerable dining options, or find the perfect spot for post-work drinks.

### WE RECOMMEND

 Ye Olde Cheddar Cheese

 Epic Pies



BOUTIQUE. CO

# CARTER LANE

GET IN TOUCH WITH US:

☎ 020 3405 7000

✉ [enquiries@boutique.co](mailto:enquiries@boutique.co)

FOLLOW US:



[@boutiqueworkco](https://www.instagram.com/boutiqueworkco)

[www.boutique.co](http://www.boutique.co)

