




BOUTIQUE. CO
CLERKENWELL
ROAD
CLERKENWELL

THE BOUTIQUE COLLECTION

29 Clerkenwell Road, London, EC1M 5RN



WELCOME TO CLERKENWELL ROAD

One of our largest flexible workplaces, on the site of a former bicycle factory nestled in the creative heart of Clerkenwell.

29 Clerkenwell Road spans over 17,000sqft, filled with flexible office space, coworking facilities, and all the amenities you could ever need. Occupying a historic site and flanked by 19th century buildings in the Clerkenwell Green Conservation area, it's a greatly sought-after address for anyone in creative design. With a range of working options at our boutique workplace, you can now be a proud resident of Clerkenwell's creative centre on terms that suit you.

Clerkenwell is an area that brims with history, and Clerkenwell Road has seen a lot of it unfold. Packed with converted buildings, from former convents to ex-priories, musical halls to hospitals, the past meets the present everywhere you look. 29 Clerkenwell Road is no exception – a site that was once home to a bicycle factory before being rebuilt in 1920 for use as a showroom by store fitters Pollard & Co.

Heading further back in time, the nearby Grade I listed St John's Gate, built in 1504, is a survivor of the medieval Priory of St John, the birthplace of the St John Ambulance Service. We've now converted the historic 29 Clerkenwell Road into a cutting-edge workplace, catering for businesses large and small with diverse, unbranded, and fully-furnished office space.

With full amenities including breakout spaces, a roof terrace, phone booths, several kitchen points and meeting rooms, it's the perfect setting for businesses looking for a workplace that meets their every need.

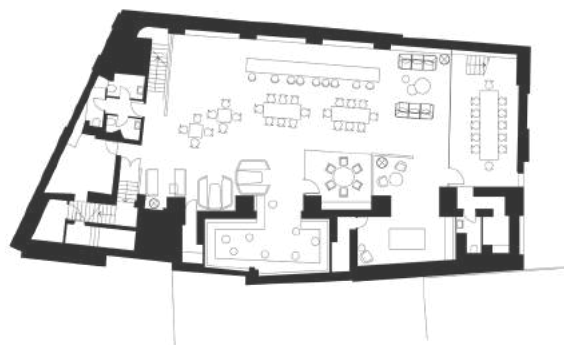


THE BOUTIQUE COLLECTION

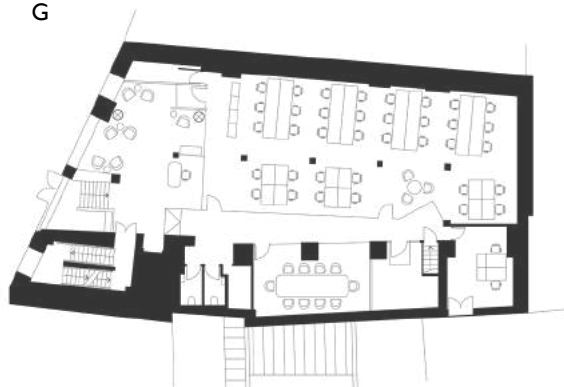
Floor plans



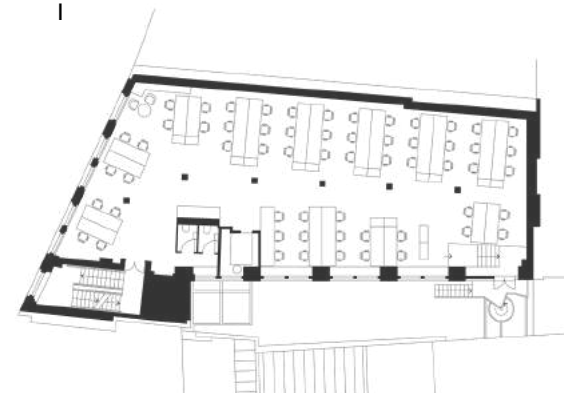
LG



G



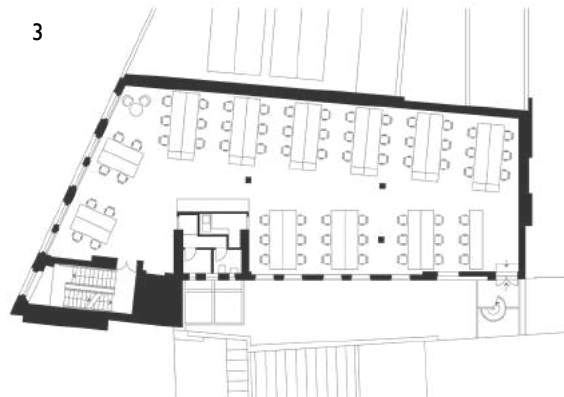
I



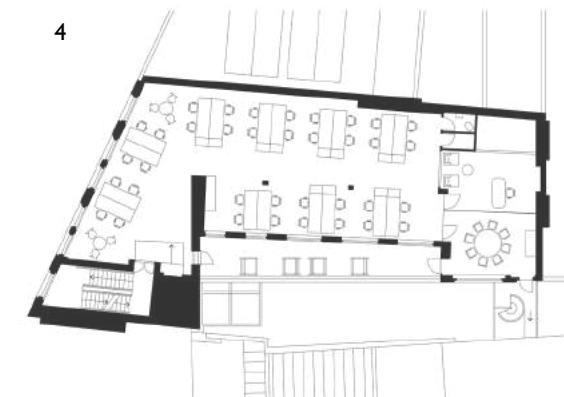
2



3



4





THE BOUTIQUE COLLECTION







Choose your workspace



FEATURES AND FACILITIES

- Dog-friendly
- Reception
- Barista-style coffee
- WiFi
- Business-grade fibre-optic broadband
- Rent, business rates, utilities, service charge, and building insurance inclusive
- Daily cleaning and general building maintenance
- Air filtration and fresh airflow
- VoIP telephony
- 24-hour access
- Phone booths
- Outdoor space
- Part of The Boutique Members Club
- Roof terrace
- Passenger lift
- Cyclist-friendly
- Breakout areas
- AC, Air filtration and fresh airflow
- Event space and networking
- Mailing and trading address

CHOOSE YOUR WORKSPACE

	Private Offices A collection of high-quality private flexible serviced offices.
	Meeting Rooms Thoughtfully-designed meeting rooms available on-demand.
	Event Space Host your next event in our unique event space.
	Membership This workplace is part of the Boutique Members Club, work remotely from the lounges from just £70 per month.
 	Membership + Virtual Office Enjoy a professional trading address with the flexibility to work in any of our Boutique Members Club lounges.



THE BOUTIQUE COLLECTION

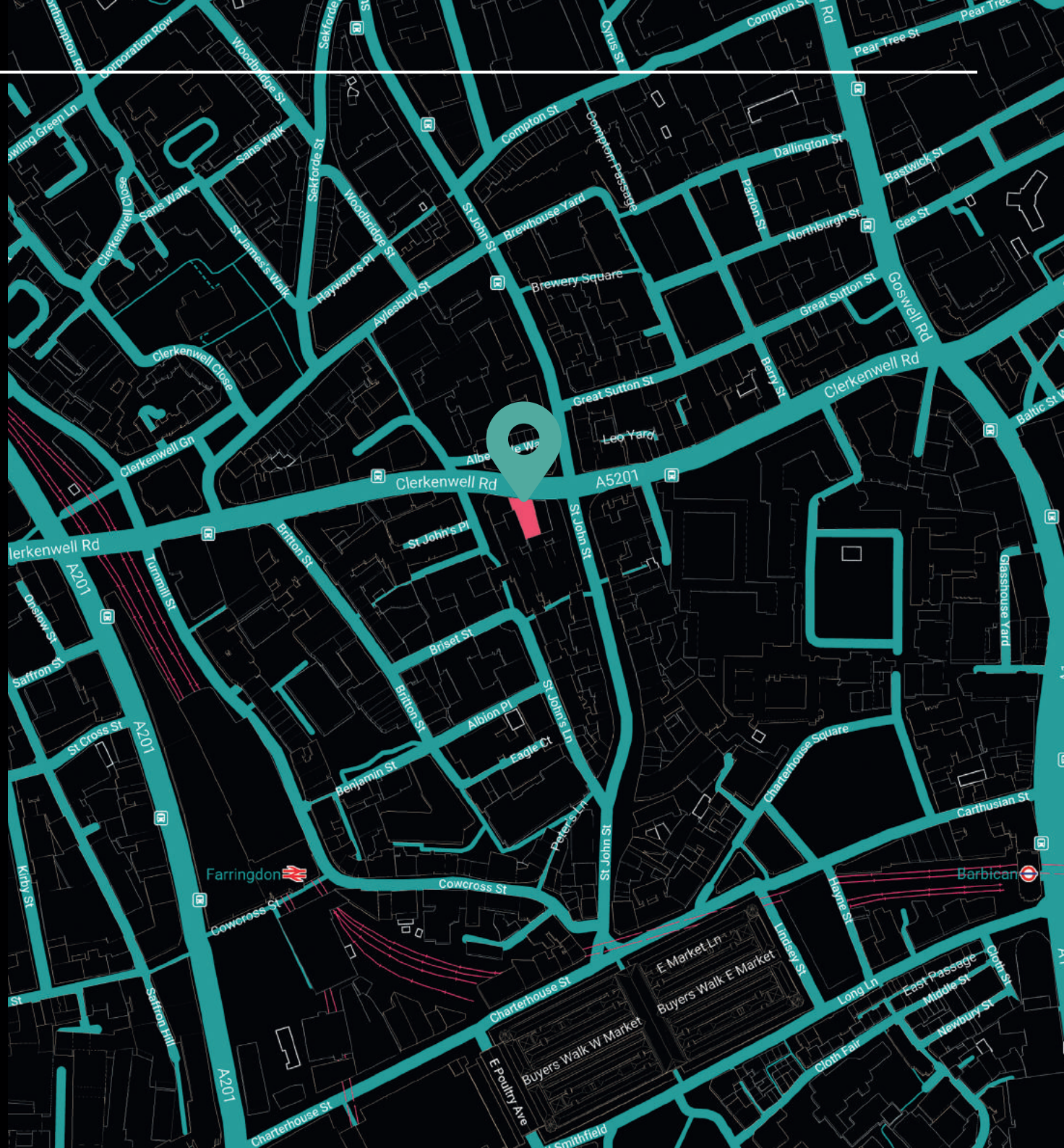
Map location

LOCATION

29 Clerkenwell Road
London
EC1M 5RN

Clerkenwell Road, lying between Clerkenwell and Farringdon, is a great location for a workspace. It's easily reached from elsewhere in London via nearby Farringdon and Barbican underground stations, providing access to lines including Circle, Hammersmith & City, and Metropolitan.

Farringdon Station is also set to become part of the upcoming Crossrail network, making it even easier to reach 29 Clerkenwell Road from further afield. It is also one stop on the overground to Kings Cross St. Pancras International providing easy access for overseas business.



THE BOUTIQUE COLLECTION

Things to do nearby



THINGS TO DO NEARBY

ENJOY THE FOOD SCENE

For the foodies amongst you, Leather Lane food market, a huge range of cafes, and plenty of well-known restaurants surrounding the famous Smithfield Market are close by to Clerkenwell Road for lunchtime or after-work eats.

VISIT THE MUSEUM OF LONDON

The Museum of London is just over 10 minutes away on foot, meaning you can become a regular and keep up with the changing exhibitions about London's history.

WE RECOMMEND



The Gibson



Breddos Tacos Clerkenwell



Zetter Townhouse



BOUTIQUE. CO
**CLERKENWELL
ROAD**
CLERKENWELL

GET IN TOUCH WITH US:

☎ 020 3405 7000

✉ enquiries@boutique.co

FOLLOW US:



[@boutiqueworkco](https://www.instagram.com/boutiqueworkco)

www.boutique.co

