




BOUTIQUE. CO

**GREEN
STREET**

MAYFAIR

THE BOUTIQUE COLLECTION

25 Green Street, London, W1K 7AX



WELCOME TO GREEN STREET

A boutique flexible workplace on Mayfair's Green Street, full of local character and featuring a much sought-after address.

Our workplace at 25 Green Street is the perfect fit for the area it sits in. Based in a period building constructed in the late 19th century, it retains original features and is full of Mayfair character. With private office suites fit for 2-120 people, a lounge area with premium coffee-making facilities, and stylish but understated design touches, it's a great choice for businesses seeking something a little bit more refined. And, in a prime W1 location, it's ideally situated for easy access from elsewhere in London via the underground.

Green Street, named after local builder John Green and constructed by Robert William Edis in 1893, has played home to various poets, musicians, fashion designers, and authors throughout history. Particularly notable residents of this street include William Blake, Alexander McQueen, Ian Fleming, and The Beatles. In fact, it was the only London address where the Fab Four all lived together.

And it's not hard to see why – Green Street is in the heart of Mayfair, surrounded by the most exclusive restaurants, shops, and bars, and perched encouragingly on the edge of Hyde Park.

“

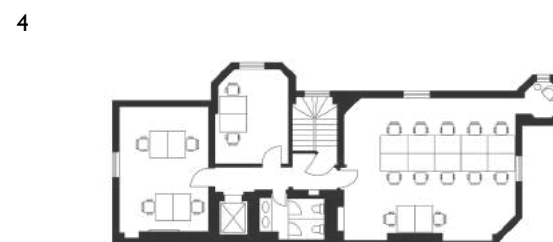
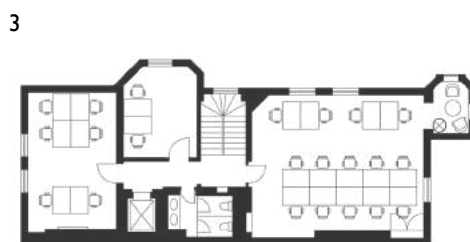
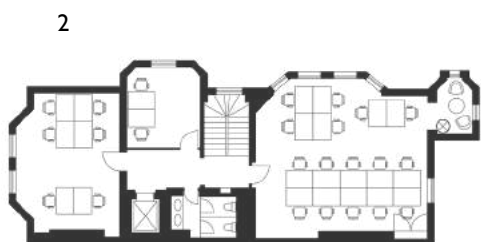
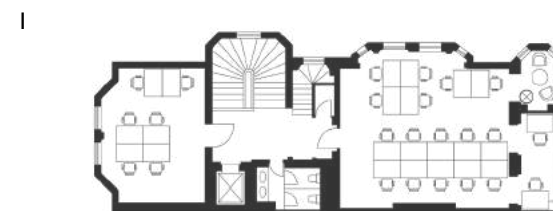
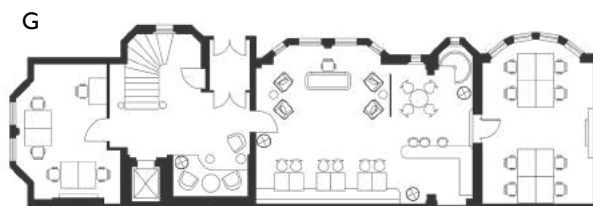
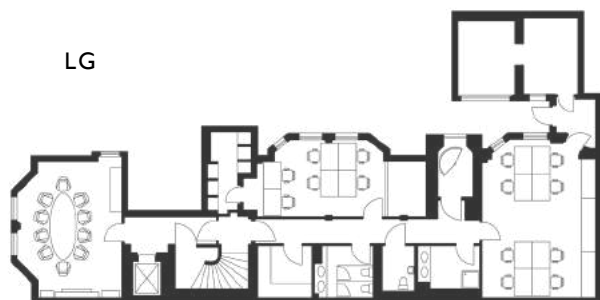
25 Green Street is a smaller, boutique building located in a hugely desirable area of Mayfair, with a much sought-after address. But it's really what's inside that counts!

”



THE BOUTIQUE COLLECTION

Floor plans





THE BOUTIQUE COLLECTION

Choose your workspace



FEATURES AND FACILITIES

- Dog-friendly
- Reception
- Barista-style coffee
- WiFi
- Business-grade fibre-optic broadband
- Rent, business rates, utilities, service charge, and building insurance inclusive
- Daily cleaning and general building maintenance
- Hand sanitising stations
- Air conditioning, air filtration and fresh airflow
- VoIP telephony
- 24-hour access
- Break-out areas
- Part of The Boutique Members Club
- Fully furnished
- Passenger lift
- Cyclist-friendly
- Mailing and trading address

CHOOSE YOUR WORKSPACE



Private Offices

A collection of high-quality private flexible serviced offices.



Meeting Rooms

Thoughtfully-designed meeting rooms available on-demand.



Membership

This workplace is part of the Boutique Members Club, work remotely from the lounges from just £70 per month.



Membership + Virtual Office

Enjoy a professional trading address with the flexibility to work in any of our Boutique Members Club lounges.



THE BOUTIQUE COLLECTION

Map location

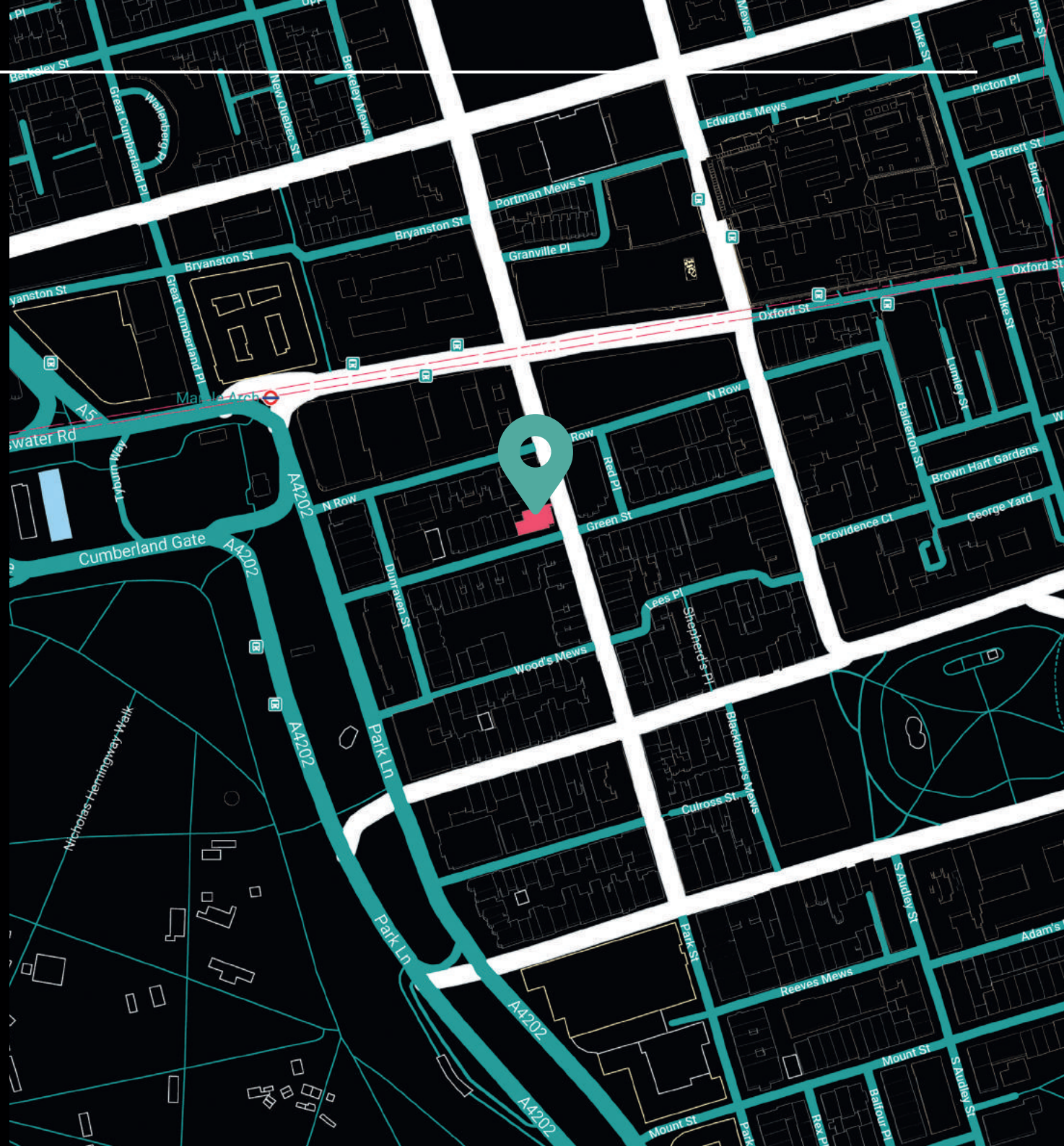
LOCATION

25 Green Street
London
W1K 7AX

25 Green Street is in an iconic part of Mayfair, right next to both Hyde Park and Grosvenor Square.

It's also within throwing distance of both Bond Street and Marble Arch tube stations, unlocking the rest of London via the Central, Bakerloo, Victoria, and Piccadilly lines.

But we're also cyclist-friendly at 25 Green Street so, if you'd prefer to pedal to work, you can.



THE BOUTIQUE COLLECTION

Things to do nearby



THINGS TO DO NEARBY

EXPLORE HYDE PARK

Just a couple minutes' walk from Hyde Park, 25 Green Street is in the perfect location to explore the sprawling park on your lunch breaks or after work.

SHOP AWAY ON OXFORD STREET

You're also not far from Oxford Street at our workplace, so you can shop till you drop in one of London's most prominent retail destinations any time you'd like.

WE RECOMMEND

 Marlborough Head

 Cardinals of Mayfair



BOUTIQUE. CO

GREEN STREET

MAYFAIR

GET IN TOUCH WITH US:

☎ 020 3405 7000

✉ enquiries@boutique.co

FOLLOW US:



[@boutiqueworkco](https://www.instagram.com/boutiqueworkco)

www.boutique.co

