




BOUTIQUE. CO

GROSVENOR
GARDENS
VICTORIA

THE BOUTIQUE COLLECTION

7 Grosvenor Gardens, London, SW1W 0BD



WELCOME TO GROSVENOR GARDENS

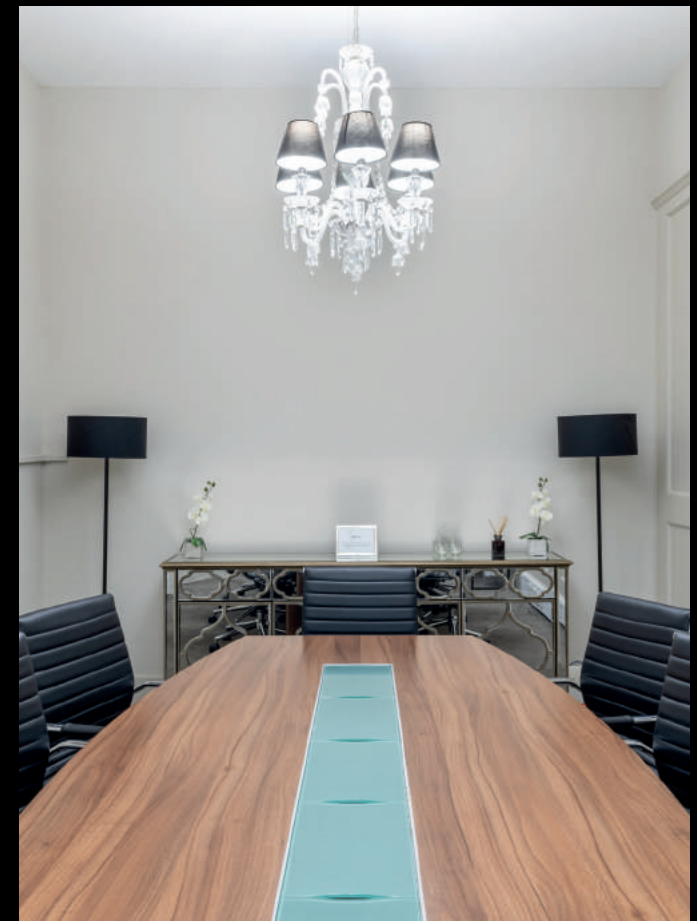
A Grade II listed flexible workplace spread over six floors in London's Victoria, where you'll share a postcode with the Queen herself.

7 Grosvenor Gardens is practically neighbouring Buckingham Palace, it's suitably royal with an incredible French Renaissance style façade. Inside, you'll find a range of self-contained, unbranded, serviced office suites that are perfect for small to medium sized businesses, all refurbished to the highest standard while preserving original features including sash windows, high ceilings, and ornate Victorian fireplaces.

It was originally built in 1868 as part of a grand terrace of houses that were constructed in the French Renaissance style. Notable residents of Grosvenor Gardens throughout the years have included Earls, eminent archaeologists, and poets, and the land was previously owned by Westminster Abbey. Number 7 Grosvenor Gardens is an exemplary relic of the architectural style of the 19th century, with Grade II listed status but it's far from being stuck in the past.

We respectfully refurbished the interiors whilst paying homage to its Victorian roots with tiling that matches the style of the era and grand chandeliers. Amenities include an eight-person meeting room, two modern kitchens and even showering facilities.

With an SW1 postcode, you're well connected to the rest of London with nearby underground stations Victoria and St James's Park offering connections to major tube lines. It's an ideal workplace choice for businesses that want one of the most prestigious addresses in London and a space that offers bags of classic character.

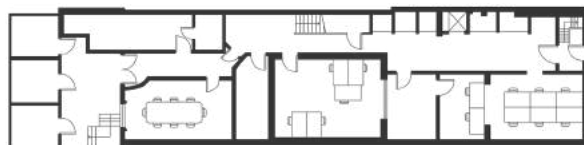


THE BOUTIQUE COLLECTION

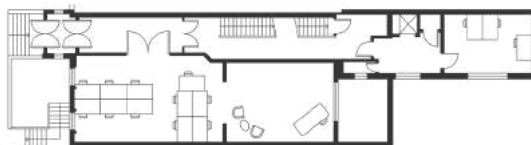
Floor plans



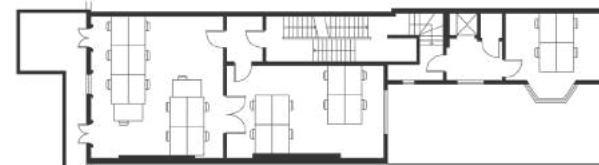
LG



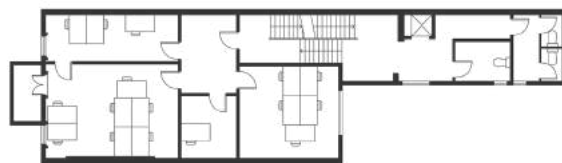
G



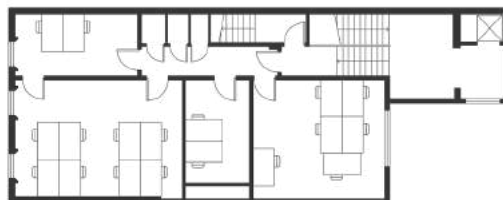
I



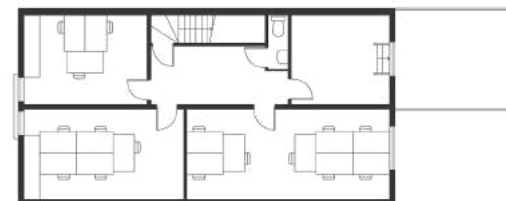
2



3



4





THE BOUTIQUE COLLECTION

Choose your workspace



FEATURES AND FACILITIES

- Dog-friendly
- Reception
- Barista-style coffee
- WiFi
- Business-grade fibre-optic broadband
- Rent, business rates, utilities, service charge, and building insurance inclusive
- Daily cleaning and general building maintenance
- Air filtration and fresh airflow
- Cyclist-friendly
- 24-hour access
- Passenger lift
- Fully furnished
- Showers
- Prime location
- High ceilings and period features
- Mailing and trading address

CHOOSE YOUR WORKSPACE



Private Offices

A collection of high-quality private flexible serviced offices.



Meeting Rooms

Thoughtfully-designed meeting rooms available on-demand.



Virtual Office

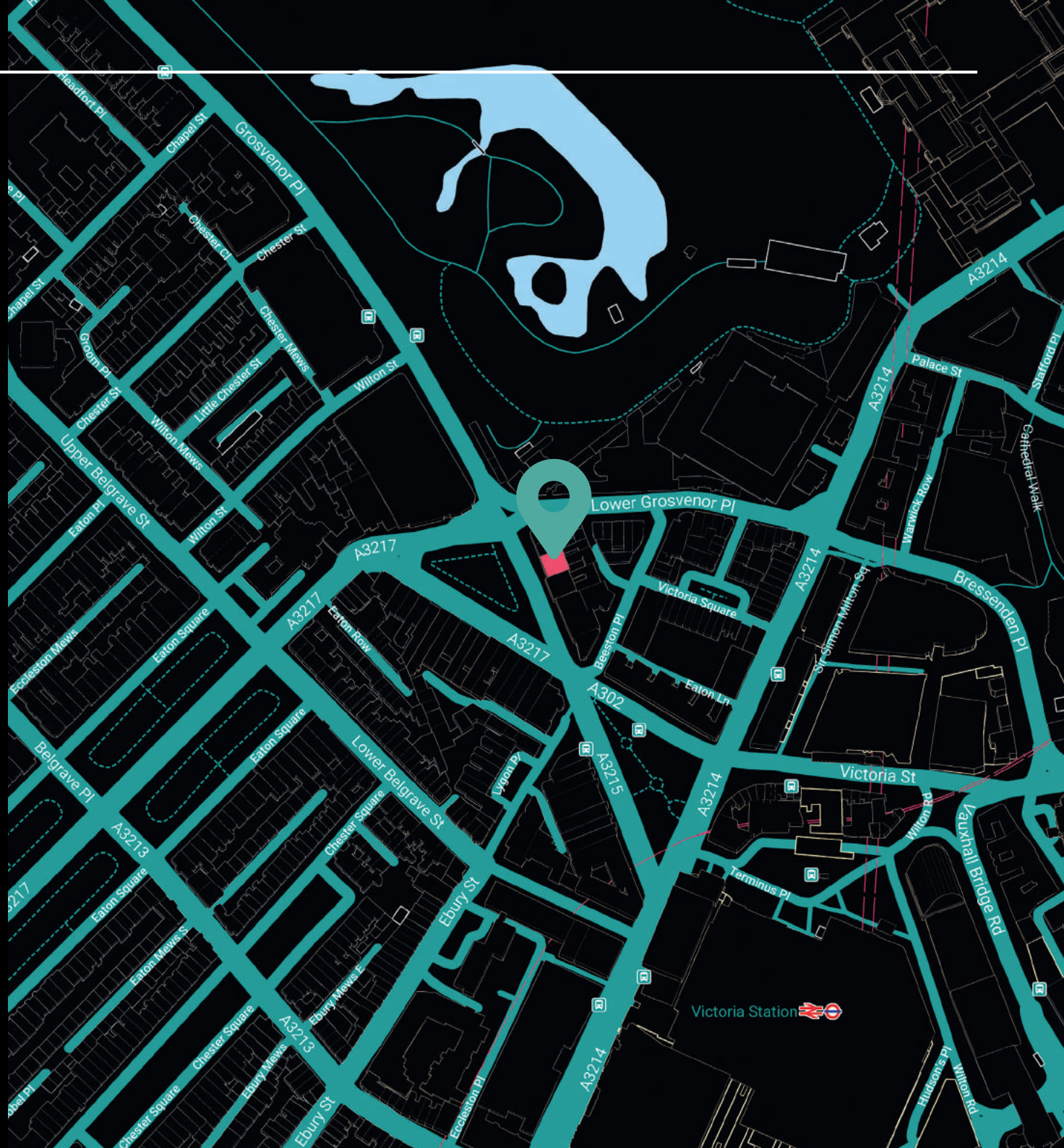
Use of this desired London trading address as well as an (020) London number in order to give your clients the best first impression for your business.



LOCATION

**7 Grosvenor Gardens
London
SW1W 0BD**

Grosvenor Gardens practically neighbours Buckingham Palace and is therefore well-connected to the rest of London, with nearby underground stations Victoria and St James's Park offering connections to major tube lines. 7 Grosvenor Gardens is also cyclist-friendly, so if you fancy biking your way to work, you're welcome to!



THE BOUTIQUE COLLECTION

Things to do nearby



THINGS TO DO NEARBY

DINE IN VICTORIA

In close proximity to Victoria, an area with a thriving café and restaurant scene, Grosvenor Gardens offers plenty of choices when it comes to lunchtime or post-work eats.

EMBRACE YOUR INNER TOURIST

7 Grosvenor Gardens is on the doorstep of some of London's most beloved sites, including Buckingham Palace, Westminster Cathedral, and Hyde Park.

WE RECOMMEND

 Greenwood London

 Timmy Green

 The Z Hotel



BOUTIQUE. CO
**GROSVENOR
GARDENS**
VICTORIA

GET IN TOUCH WITH US:

📞 020 3405 7000

✉️ enquiries@boutique.co

FOLLOW US:



[@boutiqueworkco](https://www.instagram.com/boutiqueworkco)

www.boutique.co

